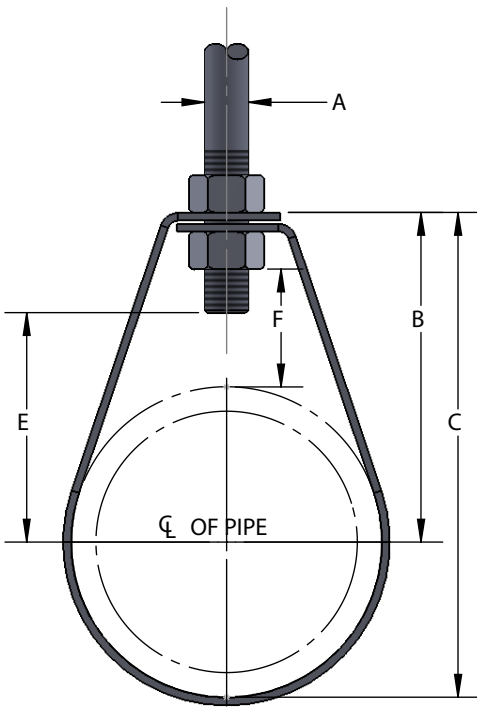


FIG. 31
band hanger



"E" dimension includes exposed rod threads beyond bottom of the hex nut. Exposed rod thread dimension is equal to the diameter of the rod used.



Materials/Finishes	Plain Carbon Steel (31-BK)	Electro-Galvanized (31-EG)
	Plastic Coated (31-CP)	T-304 Stainless (31-SS4)
	T-316 Stainless (31-SS6)	
Service:	Designed for the suspension of non-insulated stationary pipe lines. The plastic coated band hanger protects the pipe from the steel surface of the hanger and is designed to reduce noise, vibration and prevents electrolysis between pipe and the hanger. Stainless steel hangers are recommended for applications where protection from corrosive environments is needed.	
Approvals:	Complies with Federal Specification WWH-171-E (Type# 7), A-A-1192A (Type# 7), Manufacturers' Standardization Society SP-58 and MSS SP-69 (Type# 7).	
Ordering:	Specify figure number, finish and pipe size	
Notes:	Upper locknut must be tightened securely to assure proper hanger performance.	

PIPE SIZE	PIPE OD	A	B	C	E	F	WGT EACH (LBS)	MAX REC LOAD (LBS)
3/8	0.675	3/8	2-1/4	2-5/8	1-7/16	1-1/2	.100	610
1/2	0.840	3/8	2-3/16	2-9/16	1-3/8	1-5/16	.100	610
3/4	1.050	3/8	2	2-9/16	1-3/16	1-1/16	.100	610
1	1.315	3/8	2-3/16	2-13/16	1-5/16	1-1/16	.120	610
1-1/4	1.660	3/8	2-5/16	3-1/8	1-1/2	1-1/16	.120	610
1-1/2	1.900	3/8	2-3/8	3-3/8	1-9/16	1	.140	610
2	2.375	3/8	2-13/16	4	2	1-3/16	.160	610
2-1/2	2.875	1/2	3-3/8	4-13/16	2-1/4	1-5/16	.280	970
3	3.500	1/2	3-3/4	5-9/16	2-5/8	1-3/8	.380	970
3-1/2	4.000	1/2	4-3/16	6-3/16	3-1/16	1-9/16	.420	970
4	4.500	1/2	4-5/8	6-15/16	3-7/16	1-11/16	.600	1130
5	5.563	1/2	5-1/16	7-7/8	3-15/16	1-5/8	.700	1130
6	6.625	3/4	6-3/8	9-3/4	4-3/4	2-3/16	1.340	1600
8	8.625	3/4	8-1/16	12-7/16	6-7/16	2-7/8	1.640	1800