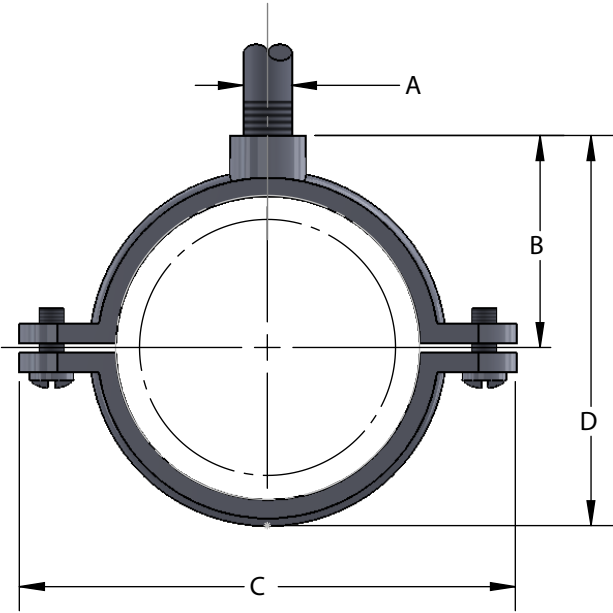


FIG-41SS

T-316 stainless split ring extension hanger



Materials/Finishes	T-304 Stainless (41-SS4)	T-316 Stainless (41-SS6)
Variants:	N/A	
Service:	Designed for the suspension of non-insulated stationary pipe lines, horizontally or vertically.	
Approvals:	Complies with Manufacturers' Standardization Society MSS SP-58 and SP-69 (Type# 12).	
Ordering:	Specify figure number, material and pipe size.	
Notes:	Stainless steel hangers are recommended for applications where protection from a corrosive environment is required.	

PIPE SIZE	PIPE OD	SCREW	A	B	C	D	WGT EACH (LBS)	MAX REC LOAD (LBS)
3/8	0.675	10-24	3/8-16	11/16	1-13/16	1-3/16	0.084	180
1/2	0.840	10-24	3/8-16	3/4	2-1/8	1-3/16	0.098	180
3/4	1.050	10-24	3/8-16	7/8	2-1/2	1-9/16	0.112	180
1	1.315	10-24	3/8-16	1-1/8	2-3/4	2	0.147	180
1-1/4	1.660	10-24	3/8-16	1-5/16	3-3/16	2-3/8	0.181	180
1-1/2	1.900	10-24	3/8-16	1-7/16	3-3/8	2-5/8	0.214	180
2	2.375	10-24	3/8-16	1-5/8	3-15/16	3-1/16	0.300	180
2-1/2	2.875	1/4	1/2-13	2-1/8	5-3/16	3-13/16	0.580	300
3	3.500	1/4	1/2-13	2-1/2	5-11/16	4-5/8	0.720	300
4	4.500	1/4	1/2-13	2-7/8	6-3/4	5-9/16	1.020	300