



Low-Strength Steel Coupling Nut

Zinc Plated, 1/2"-13 Thread Size

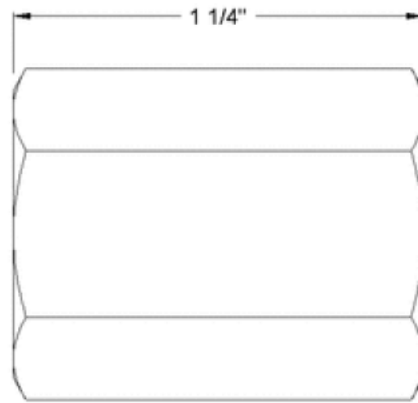
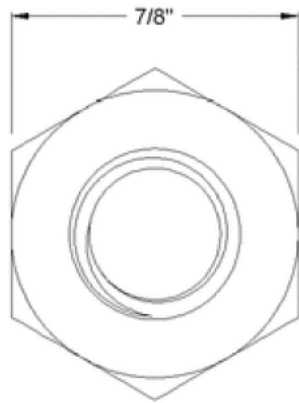
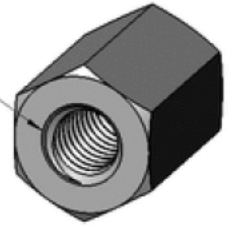


Material	Zinc Plated Steel
Thread Size	1/2"-13
Thread Type	UNC
Thread Spacing	Coarse
Thread Fit	Class 2B
Thread Direction	Right Hand
Length	1 1/4"
Width	7/8"
Threading	Fully Threaded
Drive Style	External Hex
Nut Type	Coupling, Hex
Coupling Nut Profile	Standard
System of Measurement	Inch

Also known as extension nuts, use these to connect and extend threaded rods. They're about half the strength of medium-strength steel coupling nuts for use in light duty fastening applications.

Black-oxide steel coupling nuts have a dark surface color and are mildly corrosion resistant in dry environments.

1/2"-13 Thread



Hex
Coupling Nut

The information in this 3-D model is provided for reference only.